

# EPSON

EXCEED YOUR VISION

COLOUR INKJET

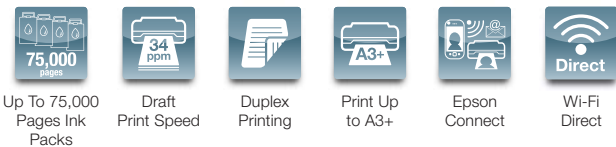
WORKFORCE PRO WF-R8591

**PT. SOLUSI SUKSES PRATAMA**  
Developing Solutions

**MAXIMISE PRINT VOLUME.  
MINIMUM PRINT COSTS.**



With a Replaceable Ink Pack System (RIPS), the Epson WorkForce Pro WF-R8591 is designed to fit all your business printing needs. Save printing costs and minimise downtime with high-capacity ink packs capable of printing up to 75,000 pages. Achieve high-quality and high-speed printing with Epson's PrecisionCore™ printhead, with draft print speeds of up to 34ppm and resolutions of up to 4,800 x 1,200 dpi.



Bundled with 4 Epson Ink Packs, with options to add up to 2 Paper Cassettes and 1 Cabinet.

## ENGINEERED FOR BUSINESS

### High Quality and Productivity

Print up to 4,800 x 1,200 dpi and enjoy unparalleled productivity with no warm-up time and fast first page out time of less than 7 seconds.

### Versatile Paper Handling

Expand paper handling capabilities with optional paper cassettes and a rear tray for special media.

### Exceptional Low Running Costs

Maximise cost-savings with Epson's extremely high-yield replaceable ink packs, capable of printing up to 75,000 pages.



PRECISIONCORE

Equipped with high-yield replaceable ink packs and powered by Epson's PrecisionCore™ technology, the WF-R8591 has the speed and performance required for office, commercial and industrial printing. Coupled with a package of security, connectivity and functional features, you'll be set to keep your business' productivity at its peak.



### High Quality and Productivity



**PRECISIONCORE**

Enjoy default print speeds of up to 24 ipm and draft print speeds of up to 34 ppm for both black and colour prints with PrecisionCore™ printheads. This revolutionary technology delivers professional output quality at blazing speeds.

Achieve excellent print resolution of 600 x 600 dpi for standard prints and up to 4,800 x 1,200 dpi for prints with special media, with no warm-up time and a fast first page-out time of less than 7 seconds.

### Exceptional Low Running Costs



With Epson's Replaceable Ink Pack System (RIPS), exorbitant printing costs are a thing of the past. The revolutionary RIPS features four ink supply units and a waste ink box, giving you up to 75,000 pages of uninterrupted printing in both black and colour. With such page yields, you enjoy maximum cost savings and minimum running costs.

### Versatile Paper Handling

The WF-R8591 can be upgraded with additional paper cassettes to support up to 1,831 sheets input capacity. Paper of different sizes can be placed in the different cassettes for automatic selection. A single sheet priority input is also available for manual feeding of templates such as letter heads and the rear tray enables the use of special media such as photo media. What's more, a cabinet can be added for convenient storage of additional paper and spare consumables.



Consumables	Page Yield*	Order Code
Black Ink Pack	75,000 pages	C13T846190
Cyan Ink Pack	75,000 pages (Composite Yield)	C13T846290
Magenta Ink Pack		C13T846390
Yellow Ink Pack		C13T846490
Maintenance Box	70,000 pages	C13T671200
Replacement Pick Up Roller	200,000 pages	C13S990011
Options		Order Code
500-sheets Option Paper Cassette		C12C817061
Option Cabinet		C12C847261

\* In accordance with ISO 24711/24712. Actual yields will vary considerably for reasons including images printed, print settings, temperature and humidity. Yields may be lower when printing infrequently or predominantly with one ink colour. A variable amount of ink remains in the cartridges after the "replace cartridge" signal. Part of the ink from the first cartridges is used for priming the printer. Ink is used for both printing and printhead maintenance. All inks are used for both black and colour printing.

## Connectivity Features

### Network Connectivity and Standalone Capability

Equipped with Ethernet, Wi-Fi, RJ-11 fax, Wi-Fi Direct\* and USB 2.0, the WF-R8591 is perfect for office environments. Wi-Fi Direct acts as an access point, allowing up to four devices to connect directly to the printer at a time. And with EpsonNet Config, you can easily change your network settings remotely.



\* Wi-Fi and Wi-Fi Direct cannot be used simultaneously.

### Epson Connect Enabled

Wirelessly print your documents from anywhere in the world with Epson Connect's wide range of features:

- **Epson iPrint** – Print from and scan directly to your smart device or online cloud storage services.
- **Epson Email Print** – Print to any Email Print-enabled Epson printer from any device or PC with email access.
- **Remote Print Driver** – Print to a compatible Epson printer anywhere in the world via the Internet using a PC with Remote Print driver or from mobile devices via the Epson iPrint app.
- **Scan to Cloud** – Share your scans through email or store them online in cloud storage services.

### Other mobile solutions:

- **Apple® AirPrint™**
- **Google Cloud Print™**

## Convenient Ease of Use



### Automatic Duplex Printing

Supports automatic duplex printing of up to 16 ipm for A4 and 11 ipm for A3, reducing paper wastage.



### 5" LCD Screen

Experience easy set-up and PC-less operation with a 5" colour touch screen.



### USB Host Function

Comes equipped with a USB port so you can print, scan and save faxes directly to your memory devices.



### One-pass Duplex Scanner

Scan with impressive speed in both simplex and duplex. The dual CIS technology allows duplex scanning in a single pass, resulting in significant improvements in office productivity.

## Robust Security Features

### Limited Access Function

Reduce risk of information leaks by limiting the access to functions for up to 10 user accounts.

### LDAP Address Book

Prevent information leaks by using the address book registered in the LDAP server to accurately select recipient E-mail addresses.

### Secured Printing with PIN Release

Print confidential documents by setting a PIN to a print job for release on the printer panel.

### IP Address Filter

Secure your documents by preventing unauthorised devices from connecting to the printer.

### Panel Admin Mode

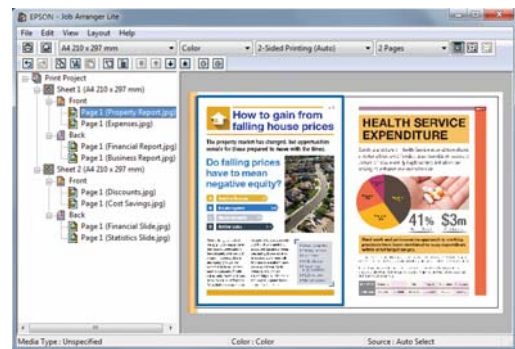
Set a password to access and change administrator settings for the printer. This prevents unauthorised users from changing the printer settings.

## Efficient Print Job Management

With our convenient and accessible print management features, printing across your work groups has never been easier.

### Print Job Arranger Lite

This printing tool allows users to merge multiple print jobs and change print settings such as double-side printing, orientation, colour mode and multi-page layout up to 4-up. Users can also rearrange the page order of print jobs between applications.



### Print Job Interruption

With this feature, users can interrupt the print queue when there is an urgent print job. Interrupted print jobs are paused and can be resumed later once the urgent tasks are completed. In addition, users can cancel the print job from the control panel even when the printer is in the process of printing.

### Page Recovery

Minimise downtime when a printer error occurs. The printer will automatically restart the printing once error is rectified.

## Remarkably Energy Saving



Epson WF-R8591 is Energy Star® Compliant, giving you significant energy savings. Unlike conventional laser copiers/printers, it uses no heat and is more environmentally friendly.

<b>MODEL NUMBER</b>	<b>WF-R8591</b>
<b>Printing</b>	
Print Method	PrecisionCore™ Print Head
Nozzle Configuration	400 x 2 nozzles each colour (Black, Cyan, Magenta, Yellow)
Print Direction	Bi-directional printing, Uni-directional printing
Maximum Resolution	4,800 x 1,200 dpi (with Variable-Sized Droplet Technology)
Minimum Ink Droplet Volume	3.7 pl
Print Speed	
Max Draft Text, A4 <sup>1)</sup> , (Black <sup>1)</sup> / Colour <sup>2)</sup>	Simplex: Approx. 34 ppm / 34 ppm
ISO 24734, A4 (Black / Colour)	Simplex: Approx. 24ipm / 24ipm, Duplex: Approx. 16 ipm / 16ipm
ISO 24734.2, A3 (Black / Colour)	Simplex: Approx. 13ipm / 13ipm, Duplex: Approx. 11 ipm / 11 ipm
First Page Out Time (Black / Colour)	Approx. 5 sec / 7 sec
Printer Language	ESC/P-R
Printer Control Language Emulations	PCL5c / PCL6 / PostScript3 / PDF (ver1.7)
Memory	1,536 MB
Maximum Monthly Duty Cycle	75,000 pages per month
Automatic 2-sided printing	Yes
<b>Copying</b>	
Copy Speed	
ISO 29183, A4, Flatbed (Black / Colour)	Approx. 22 ipm / 21 ipm
ISO 24735, A4, ADF (Black / Colour)	Simplex: Approx 22ipm / 21ipm, Duplex: Approx. 15ipm / 15ipm
Maximum Copies from Standalone	999 copies
Max Copy Resolution	600 x 600 dpi
Reduction/Enlargement	25 - 400%, Auto Fit Function
Copy Paper Size (Flatbed)	10 x 15 cm (4 x 6"), 13 x 18 cm (5 x 7"), A5, 8 x 10", Letter, A4, Legal, A3, 11 x 17"
Maximum Copy Size	A3
<b>Scanning</b>	
Scanner Type	Flatbed colour image scanner
Sensor Type	CIS
Optical Resolution	1,200 x 2,400 dpi
Maximum Scan Area	297.18 x 431.8 mm (11.7 x 17")
Scanner Bit Depth	
Colour	30-bit input, 24-bit output
Grayscale	10-bit input, 8-bit output
Black & white	10-bit input, 1-bit output
Scan Features	Scan to Memory Device, Scan to Network Folder/FTP, Scan to Email, Scan to Computer (Document Capture Pro), Scan to Computer (WSD)
Scan Speed (A4 Landscape)	<b>Flatbed ADF Simplex ADF Duplex</b>
Monochrome 200dpi	5 sec 23 ppm 25 ipm
Colour 200dpi	5 sec 23 ppm 25 ipm
<b>ADF Function</b>	
Support Paper Thickness	52-105 g/m <sup>2</sup>
Paper Capacity	50 pages (80 g/m <sup>2</sup> )
Automatic 2-sided Scan / Copy / Fax	Yes
<b>Fax Function</b>	
Type of Fax	Walk-up black-and-white and colour fax capability
Receive Memory / Page Memory	6 MB, Page memory Up to 550 pages (ITU-T No.1 chart)
Error Correction Mode	ITU Group3 fax with Error Correction Mode.
Fax Speed (Data Transfer Rate)	Up to 33.6kbps, Approx. 3sec/page
Fax Resolution	
Black & White	Standard: 8pels/mm x 3.85lines/mm, Fine: 8pels/mm x 7.7lines/mm, Super Fine: 8pels/mm x 15.4lines/mm, Ultra Fine: 16pels/mm x 15.4lines/mm, Photo: 8pels/mm x 7.7lines/mm
Colour	Fine: 200 x 200dpi, Photo: 200 x 200dpi
Transmission Paper Size	
Flatbed	A5, Half Letter, B5, Letter, A4, Legal, B4, A3, 11 x 17"
ADF	A5, B5, Letter, A4, Legal, B4, A3, 11 x 17"
Receiving Paper Size	A5, Half Letter, B5, Letter, A4, Legal, B4, A3, 11 x 17"
Speed Dial / Group Dial	Up to 200 numbers, 199 groups
Fax Features	PC Fax (Transmission/Receive), Automatic Redial, Address Book, Delay Send, Transmit Reservation (200 cases), Broadcast Fax (Mono Only)
<b>Paper Handling</b>	
Paper Feed Method	Friction feed
Number of Paper Trays	4 (Front 2, Rear 1, Manual Feed 1)
Paper Hold Capacity	
Input Capacity	Up to 831 sheets (80 g/m <sup>2</sup> ) (Cassette 1: 250 sheets + Cassette 2: 500 sheets + Rear Slot: 80 sheets + Front Manual Feed: 1 sheet)
Maximum Input Capacity	Up to 1,831 sheets (80 g/m <sup>2</sup> ) (Cassette 1: 250 sheets + Cassette 2: 500 sheets + Rear Slot: 80 sheets + Front Manual Feed: 1 sheet + 2 x Optional Cassettes: 500 x 2 sheets)
Output Capacity	250 sheets
Paper Size	A3+, A3, A4, B5, A5, A6, 5 x 7", 4 x 6", Legal, Letter, Envelopes: #10, DL, C6, C4
Maximum Paper Size	A3+, 329 x 1200 mm (12.95 x 47.24")
<b>Printer Interface</b>	
USB	Hi-Speed USB 2.0
Network	Ethernet (1000BASE-T/100BASE-TX/10BASE-T), Wi-Fi (IEEE 802.11b/g/n), Wi-Fi Direct
Network Protocol	TCP/IPv4, TCP/IPv6
Network Printing Protocol	LPD, IPP, PORT9100, WSD
Network Management protocols	SNMP, HTTP, DHCP, BOOTP, APIPA, PING, DDNS, mDNS, SNMP, SLP, WSD, LLTD
Security Features	Limit Access Function, PIN No. Certification, LDAP Address Book, IP Address Filtering, Panel Admin Mode
<b>USB Host Function</b>	
Type of Direct Printing	Memory Devices
USB Host	USB Host (Scan to memory device / Storage function)
Direct Print Paper Size	9 x 13 cm (3.5 x 5"), A6, 10 x 15 cm (4 x 6"), 13 x 18 cm (5 x 7"), A5, B5(JIS), Letter, A4, Legal, A3, 11 x 17"
<b>Mobile and Remote Printing</b>	Epson iPrint, Epson Email Print, Remote Print Driver, Scan to Cloud, Apple AirPrint, Google Cloud Print
<b>Control Panel</b>	
LCD Screen	5.0" / 12.7cm TFT Colour LCD
<b>Printer Software</b>	
Operating System Compatibility	Windows XP / XP Professional x64 Edition / Vista / 7 / 8 / 8.1 Windows Server 2003 / 2008 / 2012 Only printing and scanning functions are supported for Windows Server OS Mac OS X 10.6.x / 10.7.x / 10.8.x / 10.9.x
<b>Electrical Specifications</b>	
Rated Voltage	100 - 240V Universal
Rated Frequency	50 - 60 Hz
Power Consumption	
Operating	40W
Standby	18W
Sleep	2.7W
Power off	0.4W
<b>Noise Level</b>	
PC Printing/ Premium Glossy	5.3 B(A), 40 dB(A)
Photo Paper Best Photo	
PC Printing/ Plain Paper Default <sup>2)</sup>	6.5 B(A), 50 dB(A)

**Dimensions & Weight**

**WF-R8591**  
**Weight:** 53.8kg (118.6lb)



**WF-R8591 with 2 x Optional Paper Cassettes & Cabinet**  
**Weight:** 95.4kg (210.3lb)



<sup>1)</sup> Print speed (Pages Per Minute) is calculated when printed on A4 plain paper in the fastest mode. Print speed may vary depending on system configuration, print mode, document complexity, software, type of paper used and connectivity. Print speed does not include processing time on host computer.



<sup>2)</sup> Default mode in accordance with ISO7779 for MFPs.



© 2015 Epson Singapore Pte Ltd. All Rights Reserved. Reproduction in part or in whole, without the written permission from Epson, is strictly prohibited. EPSON and EXCEED YOUR VISION are registered trademarks of Seiko Epson Corporation. All other products names and other company names used herein are for identification purposes only and are the trademarks or registered trademarks of their respective owners. Epson disclaims any and all rights in those marks. Print samples shown are simulations only. Specifications and product availability are subject to change without notice and may vary between countries. Please check with local Epson offices for more information.  
Apple, iPad and iPhone are trademarks of Apple Inc., registered in the U.S. and other countries. App Store is a service mark of Apple Inc.  
Android is a trademark of Google Inc.