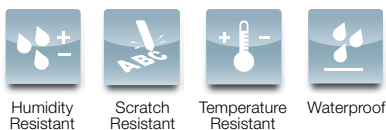


**LABEL PRINTER**  
**LABELWORKS™ PRO100**

**WIDE RANGE OF DURABLE LABELS.  
WIDE APPLICATIONS FOR EVERY NEED.**



Why write when you can label it? The Epson LabelWorks™ Pro100 lets you customize and print wide format labels with edge-to-edge printing to create larger labels. Choose from a wide range of durable ribbons and olefin-based tapes that are made to withstand harsh environments. The Pro100 includes convenient functions for printing barcodes and QR codes, making equipment labeling, asset tagging and inventory tracking a breeze.



Humidity Resistant   Scratch Resistant   Temperature Resistant   Waterproof



**Wide Format and Borderless Printing**

Prints 50mm and 100mm wide labels.  
Edge-to-edge printing combines two or more labels to create larger labels and eliminates wastage.

**High Durability**

Epson tapes are olefin-based for high resistance to moisture, chemical and environmental exposure.

**Wide Range of Media**

Choice of 7 color tapes and 5 color ribbons to customize label designs, including support for pre-cut mailing labels.

Epson's award-winning family of label printers expands its user-friendly design and flexible functionality with the new LabelWorks Pro100. With support for on-demand printing of large information and warning labels using Epson's olefin-based tapes, the Pro100 is ideal for all manner of labeling applications in demanding environments including manufacturing, warehousing, building management and more.



### Wide Format and Borderless Printing

The Pro100 enables printing of wide format labels in 50mm and 100mm width with convenient printing of on-demand labels with customizable designs and text. Its borderless printing function enables users to combine up to four labels with no margins to create larger labels and eye-catching signs of up to 400mm height while maximising media usage and eliminating waste.





## High Durability

Epson tapes are olefin-based for high durability and resistance to environmental exposure or damage from moisture and chemicals, making them ideal for applications in the toughest industrial conditions. A special strong adhesive ensures that Pro100 labels can be applied securely on surfaces and be removed with hardly any residue\*.



\* Dependent on environmental conditions and material of the label-applied object, such as materials containing a plasticiser like chloroethene. Be sure of the material of the applying surface and purpose before applying a label.

## Wide Range of Media

The Pro100 can easily customize label designs according to users' needs, with the choice of seven color tapes and five color ribbons. It also supports printing to pre-cut mailing labels for fast and convenient addressing of documents and packages.



## Perfect Label Deployment

A special 2-in-1 magnetic label applicator is included with the Pro100. Simply use the integrated leveling bubble to quickly and easily apply perfectly aligned labels every time.



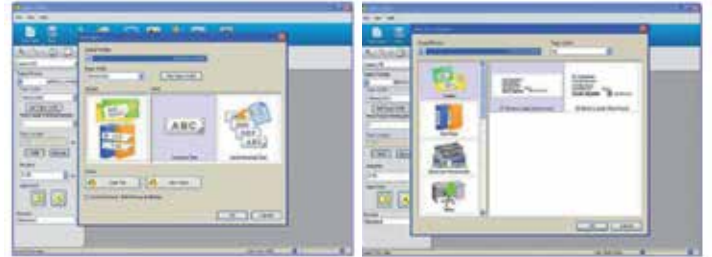
## Media Display Window

Another convenient feature on the Pro100 is the clear window on the back and front of the printer chassis. This enables users to clearly see the currently installed media, as well as the text ribbon color and type without having to lift the cover up.



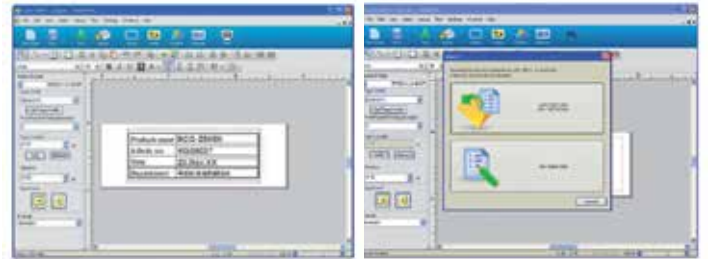
## Ultimate Versatility with Epson Label Editor

With the bundled Epson Label Editor software, users can choose from over 70 pre-installed templates to create custom labels. Images, company logos and barcodes can be easily inserted onto labels and users can also opt for borderless, edge-to-edge printing to reduce media wastage and create larger labels.



Wizard on Launch Screen

Choice of Label Template

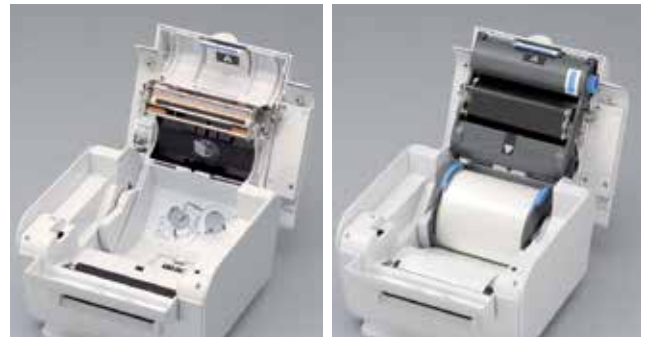


User Friendly GUI

Import Data

## Easy Installation of Tapes and Ribbons

The Pro100 is designed for ease of use with simple drop-in and snap-on installation of tape cartridges and ribbons. Installation is quick and easy without any mess.



## Environmentally Friendly

Epson tape and ribbon media for Pro100 are made with Chlorine-free materials to ensure its safety to both users and the environment.



## PARTNERS IN PERFECTION

Epson LabelWorks offers a comprehensive range of solutions from portable handheld label printers to PC-connected models for every label printing need.



**LW-300**

- Up to 12mm width • 1-line LCD display
- 2-line printing • 30 job memory



**LW-400**

- Up to 18mm width • 2-line backlit LCD display • 4-line printing
- Barcode printing • Cable-wrap media • 50 job memory



**LW-900P**

- Up to 36mm width • Optional round corner and half-cut labels
- Label Editor software included
- Insert images, borders, barcodes and symbols
- PC and Mac compatible

MODEL NUMBER	Pro100
<b>Printing</b>	
Print Technology	Thermal transfer and direct thermal
Print Resolution	300dpi
Print Speed	20mm/sec
Tape Width	2" (50mm), 4" (100mm)
<b>Print Settings</b>	
Repeat Printing	Yes
Auto Increment	Yes
Enlarge Printing	Yes
Mirror Printing	Yes
Vertical Printing	Yes
Barcodes	14 types: EAN8/EAN13/Code39/Code128/UPC-A/UPC-E/Codabar/ITF/EAN128/GS1 DataBar/QR Code/Maxicode/PDF417/Data Matrix
Margin Setting	Yes
<b>Fonts &amp; Styles</b>	
	Dependent on user's PC
<b>Hardware</b>	
Cutter	Automatic full cutter
Detection	Tape width
<b>Interface</b>	
Standard	USB 1.1 Full-Speed
<b>Supported Platforms</b>	
Operating System	Windows 7/Vista/XP (32/64-bit)
<b>Systems Requirements</b>	
Free Hard Drive Space	Approx. 100MB
Display Resolution	XGA (1024 x 768) and above
<b>Included Software</b>	
Software Features	Epson Label Editor Wizard, Pre-set labels (format), View history, Import data (.xls, .xlsx, .txt, .csv) Borderless printing, enlargement printing, background patterns
<b>Electrical Specifications</b>	
Rated voltage	AC 100-240V
Rated frequency	50~60 Hz
Power consumption	
Printing (Average)	Approx. 36W
Ready	Approx. 2.3W
Power Off	Approx. 0.48W

**Dimensions & Weight**

**Pro100**  
**Weight:** 2kg (4.4lb)



© 2012 Epson Singapore Pte Ltd. All Rights Reserved. Reproduction in part or in whole, without the written permission from Epson, is strictly prohibited. EPSON and EXCEED YOUR VISION are registered trademarks of Seiko Epson Corporation. All other products names and other company names used herein are for identification purposes only and are the trademarks or registered trademarks of their respective owners. Epson disclaims any and all rights in those marks. Print samples shown are simulations only. Specifications and product availability are subject to change without notice and may vary between countries. Please check with local Epson offices for more information.

Dealer's Stamp